

# The perfect finish with small, compact rotary ironers

Rotary ironers create the perfect finishing touch to the in-house laundry: there are easy to use, powerful machines to suit different amounts of laundry. They need very little space, can even be sited against a wall, and operated by a single person.



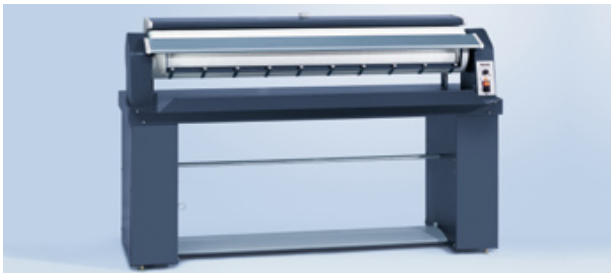
#### HM 16-83 (illustrated)

- Roller diameter 160 mm
- Roller length 830 mm
- Electric heating
- Output up to 15 kg/h at 20% initial residual moisture
- Feed-in and return of laundry to the front
- Can be installed against a wall



#### HM 21-100 (illustrated)

- Roller diameter 210 mm
- Roller length 1005 mm
- Electric heating
- Output up to 23 kg/h at 15% initial residual moisture
- Output up to 14 kg/h at 25% initial residual moisture
- Feed-in and return of laundry to the front
- Can be installed against a wall



#### HM 21-140 (illustrated)

- Roller diameter 210 mm
- Roller length 1395 mm
- Electric heating
- Output up to 27 kg/h at 25% initial residual moisture
- Feed-in and return of laundry to the front
- Can be installed against a wall

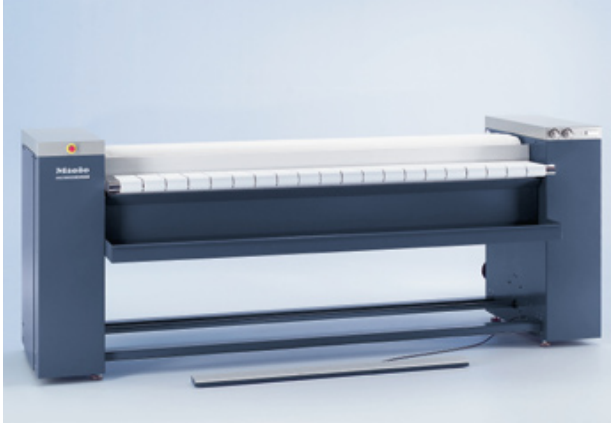


#### HM 5316 (illustrated)

- Roller diameter 250 mm
- Roller length 1650 mm
- Electric heating
- Output up to 47 kg/h at 25% initial residual moisture
- Feed-in and return of laundry to the front
- Can be installed against a wall

For technical data see page 56

# The perfect finish with large, high throughput rotary ironers



## **PM 1318** (illustrated)

- Roller diameter 300 mm
- Roller length 1750 mm
- Electric or gas heating
- Output up to 75 kg/h (EL) at 25% initial residual moisture
- Output up to 45 kg/h (EL) at 50% initial residual moisture

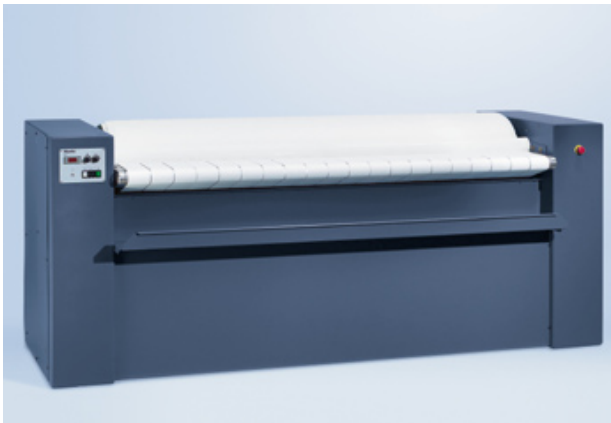
## **PM 1418**

- Roller diameter 365 mm
- Roller length 1750 mm
- Electric or gas heating
- Output up to 90 kg/h (EL) at 25% initial residual moisture
- Output up to 54 kg/h (EL) at 50% initial residual moisture

## **PM 1421**

- Roller diameter 365 mm
- Roller length 2040 mm
- Electric or gas heating
- Output up to 96 kg/h (EL) at 25% initial residual moisture
- Output up to 57 kg/h (EL) at 50% initial residual moisture

EL = electric heating



## **MM 50-175** (illustrated)

- Roller diameter 500 mm
- Roller length 1750 mm
- Electric heating
- Output up to 80 kg/h at 46% initial residual moisture
- Output up to 70 kg/h at 53% initial residual moisture

## **MM 50-205**

- Roller diameter 500 mm
- Roller length 2040 mm
- Electric heating
- Output up to 99 kg/h at 46% initial residual moisture
- Output up to 86 kg/h at 53% initial residual moisture

# Professional technology

## The advantages of Miele's

### Powerful rotary ironers

## Ironer output (kg/h) (electric heating)

	Roller diameter [mm]	Roller length [mm]	Output with residual moisture [kg/h]						
			15%	20%	25%	46%	50%	70%	
HM 16-83	160	830		15					
HM 21-100	210	1005	23		14				
HM 21-140	210	1395			27				
HM 5316	250	1650			47				
<b>NEW</b>									
PM 1318	300	1750			75		45		
PM 1418	365	1750			90		54		
PM 1421	365	2040			96		57		
MM 50-175	500	1750				80		70	
MM 50-205	500	2040				99			86

### Technology

Miele offers rotary ironers with roller diameters ranging from 160 to 500 mm.

Aluminium heater plates instead of steel, guarantee an excellent distribution of heat and considerably reduced heating up times. The foot control ensures that the roller can be easily stopped, e.g. for steaming.

A pneumatic lifting device (on MM 50-175/205) creates a high pressure ironing action for an excellent finish.

The smaller ironers (page 20) can be operated by one person and can be sited against a wall. An optional return-feed mechanism on the larger models enables them to also be operated by a single person for smaller items of laundry.

### Economy

The high throughput of a Miele rotary ironer does not necessarily mean high energy consumption. The ironer only produces heat when it needs it. For example, on the MM 50 models a 4-stage temperature control ensures a precise distribution of heat within the roller to the exact spot where it is needed.

On the large models with roller diameters of up to 500 mm, a durable roller cover with leaf-type padding and ARAMID Molton cloth is particularly economical. This can be chosen as an option instead of a cover made of elastic steel wool and ARAMID needle felt.

### Output

Thanks to the residual moisture level of approximately 50% achieved by Miele's new washer-extractors, laundry does not need to be dried any further before it is fed into a rotary ironer with a high heat output (e.g. MM 50-175).

Depending on the initial residual moisture and the type of ironer, an output of up to 99 kg/h can be achieved (see table above).

Miele's rotary ironers create an absolutely perfect finish for your linen without the use of starch.

### Output figures according to DIN 11 902

The output levels achieved in practice are on average 20-40% lower than the maximum output level. The actual output depends on the skill and experience of the operator, the type of laundry being handled, how it is pre-sorted, the condition of the rotary ironer and the standard of finish required.

# Rotary ironers with an aluminium heater plate for the perfect laundry finish

## The perfect technology for excellent results

Perfect results demand perfect ironer technology.

Miele's rotary ironer system with the aluminium heater plate offers the optimum solution. The aluminium of which the heater plate is made conducts heat four times better than steel, meaning that it is ready to operate far faster.

Unlike with other ironing systems such as the cylinder ironer, the high pressure of the heater plate on the laundry ensures an extremely efficient transfer of heat and economical use of energy. The contact time achieved by the heater plate which encloses the laundry over 167° makes for optimum results thanks to the excellent transfer of heat, and is ideal for a high throughput.

The finishing results are perceptibly higher because the high, even pressure exerted by this ironing process helps to hold the items in shape and gives the laundry a silky shine. Creases just don't stand a chance thanks to the extra smooth surface of the heater plate.

An optimum temperature is generated inside the heater plate on the electric and gas heated Miele rotary ironers. The temperature is higher at the feed-in point on the ironer to steam off the majority of residual moisture in the laundry. The heat is lower at the point where the items leave the ironer to ensure an even temperature for crease-free results.

Miele's rotary ironers are extremely economical in comparison to other ironing systems. Thanks to their fast throughput, operating costs are reduced and output is higher. A further advantage is that even with a low residual moisture level – following tumble drying – optimum finishing results can be achieved.

With cylinder ironers, where laundry is ironed without previous tumble drying, the moisture level of the items is very high as they enter the ironer. The temperature and roller speed must be adapted to this to achieve optimum finishing results. The higher the initial moisture level, the longer the costly ironing and preparation procedure takes. Tumble drying the laundry in advance is therefore always an advantage.

Ironing with previous tumble drying:

→ Low operating costs

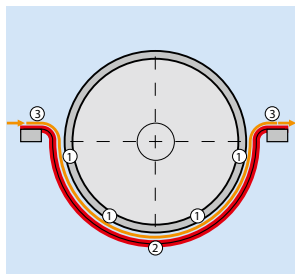


Ironing without previous tumble drying:

→ High operating costs

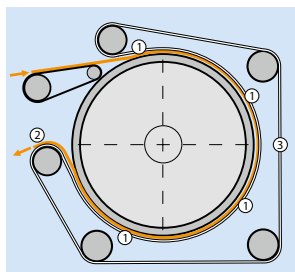


\* Preparation time



### Rotary ironers with aluminium heater plate

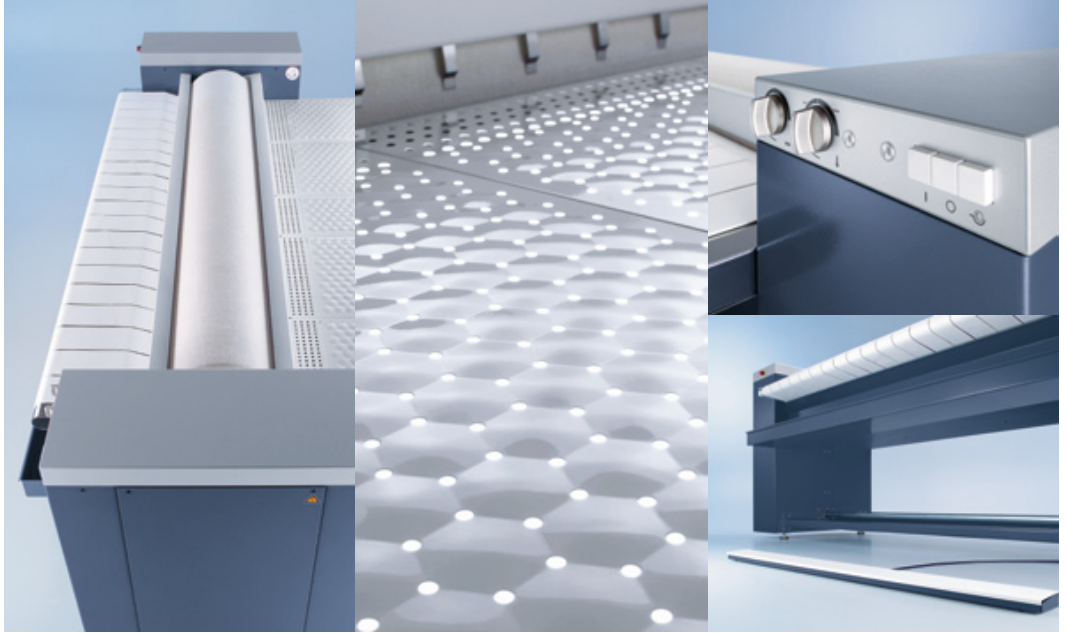
- 1 High pressure for perfect smoothing and an excellent shine
- 2 Quickly ready for operation thanks to the good transfer of heat via the aluminium heater plate
- 3 Choice of through feed or return feed (with return feed module)



### Cylinder ironers

- 1 Low pressure
- 2 Only return feed is possible
- 3 Bands must be regularly serviced

# The new features of the Miele rotary ironers PM 1318, PM 1418, PM 1421



Miele rotary ironers are the ideal solution for professional and economical laundry care. They give a perfect, professional finish to your laundry – quickly, efficiently and economically.

**New:** Optional spring padding

**Advantage:** Consistent pressure; even dispersal of the steam vapours for a perfect laundry finish; economical as the padding does not need to be changed.

**New:** The HPC heater plate

**Advantage:** The new HIGH PERFORMANCE AND CAPACITY (HPC) heater plate has a large contact angle of 167°, giving a 13% longer contact path than on previous models, resulting in an improved ironing performance. The hard, anodised, very smooth surface of the heater plate guarantees optimum laundry care with fewer deposits.

**New:** The EASYFOLD TABLE

**Advantage:** The perfectly designed surface of the EasyFold table with its sculptured, perforated honeycomb surface is gentle on fabrics. The perforations at the points where hexagons meet induce rising thermal currents, cooling laundry on the feed-out table. The gentle flow of air through the feed-out table also stabilises the finish on laundry.

**New:** Strong polyester feed belts

**Advantage:** Feeding the laundry through the ironer is easier and more controlled, resulting in improved ironing performance and quality (no creased edges).

**New:** Flexible pick-off bands

**Advantage:** No ironing marks on the textiles – even on heavy table linen.

**New:** The design

**Advantage:** Premium design to match the Miele washer-extractors and tumble dryers; clear control panel with large, easygrip rotary dials and pushbuttons.

**New:** Freely positioned FLEX CONTROL foot control

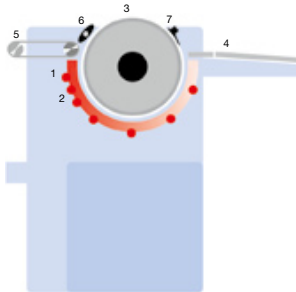
**Advantage:** The external Flex Control foot control is a mobile unit which can be located in a position convenient to the operator.

# Proven Miele technology for a professional finish

**New:** Larger heating element on the feed in side on electrically heated ironers; double burner technology on gas heated ironers.

**Advantage:** Ideal heat distribution; lower energy costs; increased performance

- 1 HPC heater plate
- 2 Ideal heat distribution
- 3 Spring padding
- 4 EasyFold table
- 5 Polyester feed-in belts
- 6 Finger guard
- 7 Flexible pick-off bands



For a long time now, Miele's HM and MM rotary ironers have been offering state-of-the-art technology to meet every need: Wide range of roller diameters between 210 and 500 mm, to suit individual requirements.

**Aluminium heater plates with outstanding** heat distribution and up to four times faster heat-up time than steel heater plates.

Adjustable pressure via the pneumatic lifting device on the heater plate for an excellent finish.

Easy to use by single operator, with an optional return feed on larger models: Space-saving installation possible against a wall.

Foot control for conveniently stopping the roller, making ironing even easier.

**Continuous speed and temperature control** for an easy operation, even when ironing different types of fabric.

**High heat-up performance with a minimum of energy consumption:** The Miele ironers only produce heat when they need it. For example, the 4-stage temperature control on the large MM ironers provides accurate heat distribution on the heater plate – exactly where it is needed.

Up to 99 kg of laundry can be processed in the rotary ironer in an hour, depending on the residual moisture level and on the model.

Miele rotary ironers create an absolutely outstanding finish to your linen without the use of starch.







# Rotary ironers

## Residual moisture 15–25%

Model number	HM 16-83	HM 21-100	HM 21-140	HM 5316
Roller diameter [mm]	160	210	210	250
Roller length [mm]	830	1005	1395	1650
Aluminium heater plate	•	•	•	•
Roller padding: double pressed steel wool	•	•	•	•
Cover: polyester-needle felt/ARAMID needle felt cloth	•	•	•	•
Heating: Electric (EL)	EL	EL	EL	EL
<b>Electrical connection</b> (electric heating)*				
1 AC 220–240 V 50–60 Hz	•	–	–	–
3 N AC 380–415 V 50–60 Hz	–	•	–	–
3 N AC 380–415 V 50 Hz	–	–	•	•
Heater rating [kW]	3.0	4.4	6.5	11
Total connected load [kW]	3.06	4.55	6.9	11.9
Fuse rating [A]	1 x 16	3 x 16	3 x 16	3 x 20
<b>Output</b>				
Roller speed [m/min]	2–4.5	1.3–3.5	1.8–5.7	1.2–3.9
Roller speed [rpm]	4–9	2.0–5.3	2.7–8.6	1.5–5.0
20% residual moisture [up to kg/h]	15	–	–	–
15% residual moisture [up to kg/h]	–	23	–	–
25% residual moisture [up to kg/h]	–	14	27	47
<b>Laundry return feed</b>				
To the front	•	•	•	•
<b>Dimensions, weight</b>				
External dimensions H/W/D [mm]	960/1050/380	986/1280/415	1055/1644/670	1040/2160/590
Weight [kg]	38	77	117	216

• = supplied as standard, – = not available

Data quoted above is for a standard machine for the German market. For other countries data is available on request. \*For other voltages please ask.

# Rotary ironers

## Residual moisture 25–50%

Model number	PM 1318	PM 1418	PM 1421
Roller diameter [mm]	300	365	365
Roller length [mm]	1750	1750	2040
Aluminium heater plate	•	•	•
Roller padding: double pressed steel wool	•	•	•
Leaf padding	Optional	Optional	Optional
Cover: polyester-needle felt/ARAMID needle felt cloth	•	•	•
Heating: Electric (EL), Gas (G)	EL / G	EL / G	EL / G
<b>Electrical connection</b> (electric heating)*			
3 N AC 380–415 V 50–60 Hz	•	•	•
Heater rating [kW]	17.6	21.4	22.9
Total connected load [kW]	18.4	22.2	23.7
Fuse rating [A]	3 x 35	3 x 50	3 x 50
<b>Output</b> (electric heating)			
Roller speed [m/min]	1.2–4.9	1.5–6.0	1.5–6.0
Roller speed [rpm]	1.3–5.2	1.3–5.2	1.3–5.2
25% residual moisture [up to kg/h]	75	90	96
50% residual moisture [up to kg/h]	45	54	57
<b>Laundry return feed</b>			
	Optional	Optional	Optional
<b>Dimensions, weight</b> (electric heating)			
External dimensions H/W/D [mm]	1318/2540/1150	1318/2540/1150	1318/2830/1150
Weight [kg]	386	398	441

• = supplied as standard

Data quoted above is for a standard machine for the German market. For other countries data is available on request. \*For other voltages please ask.



# Rotary ironers

## Residual moisture 46–53%

Model number	MM 50-175	MM 50-205
Roller diameter [mm]	500	500
Roller length [mm]	1750	2040
Aluminium heater plate	•	•
Roller padding: double pressed steel wool	•	•
Leaf padding	Optional	Optional
Cover: polyester-needle felt/ARAMID needle felt cloth	•	•
Heating: Electric (EL)	EL	EL
<b>Electrical connection</b> (electric heating)*		
3 N AC 380–415 V 50 Hz	•	•
Heater rating [kW]	40	44.1
Total connected load [kW]	42	46
Fuse rating [A]	3 x 63	3 x 63
<b>Output</b>		
Roller speed [m/min]	1.4 – 8.5	1.4 – 8.5
Roller speed [rpm]	0.9 – 5.4	0.9 – 5.4
46% residual moisture [kg/h]	80	99
53% residual moisture [kg/h]	70	86
<b>Laundry return feed</b>		
To the rear	•	•
To the front with return feed module	Optional	Optional
<b>Dimensions, weight</b> (electric heating)		
External dimensions H/W/D [mm]	1150/2454/1747	1150/2741/1747
Weight [kg]	860	925

• = supplied as standard

\* For other voltages please ask.

Data quoted above is for a standard machine for the German market.

For other countries data is available on request.

### Output figures according to DIN 11 902

The output levels achieved in practice are on average 20–40% lower than the maximum output level. The actual output depends on the skill and experience of the operator, the type of laundry being handled, how it is pre-sorted, the condition of the rotary ironer and the standard of finish required.